



## **668 Elm Pass**

**138 Ac.**

**Kerr County**

A beautiful property with over 2,500' of both sides of Elm Creek and borders on a private lake. The lovely 3,874 square foot rock home is nestled along the creek bank among huge hardwood trees. Offering a very tranquil setting. The 4 bedroom 4 bathroom house offers a large kitchen with lots of storage space, Mexican tile counters and a large island. It opens up into a large great room, with a huge rock fireplace, that is the perfect place to entertain family and friends. The large master suite offers views over the creek, large closets, a huge master bathroom, vaulted ceilings and a private porch. The house offers, large windows providing tons of natural light, walk-in closets, a metal roof, and a nice dedicated office.

The large detached 4 car garage offers an efficiency apartment that could be used for guests, as an office, or just about anything else. The garage and apartment offer lots of possible uses.

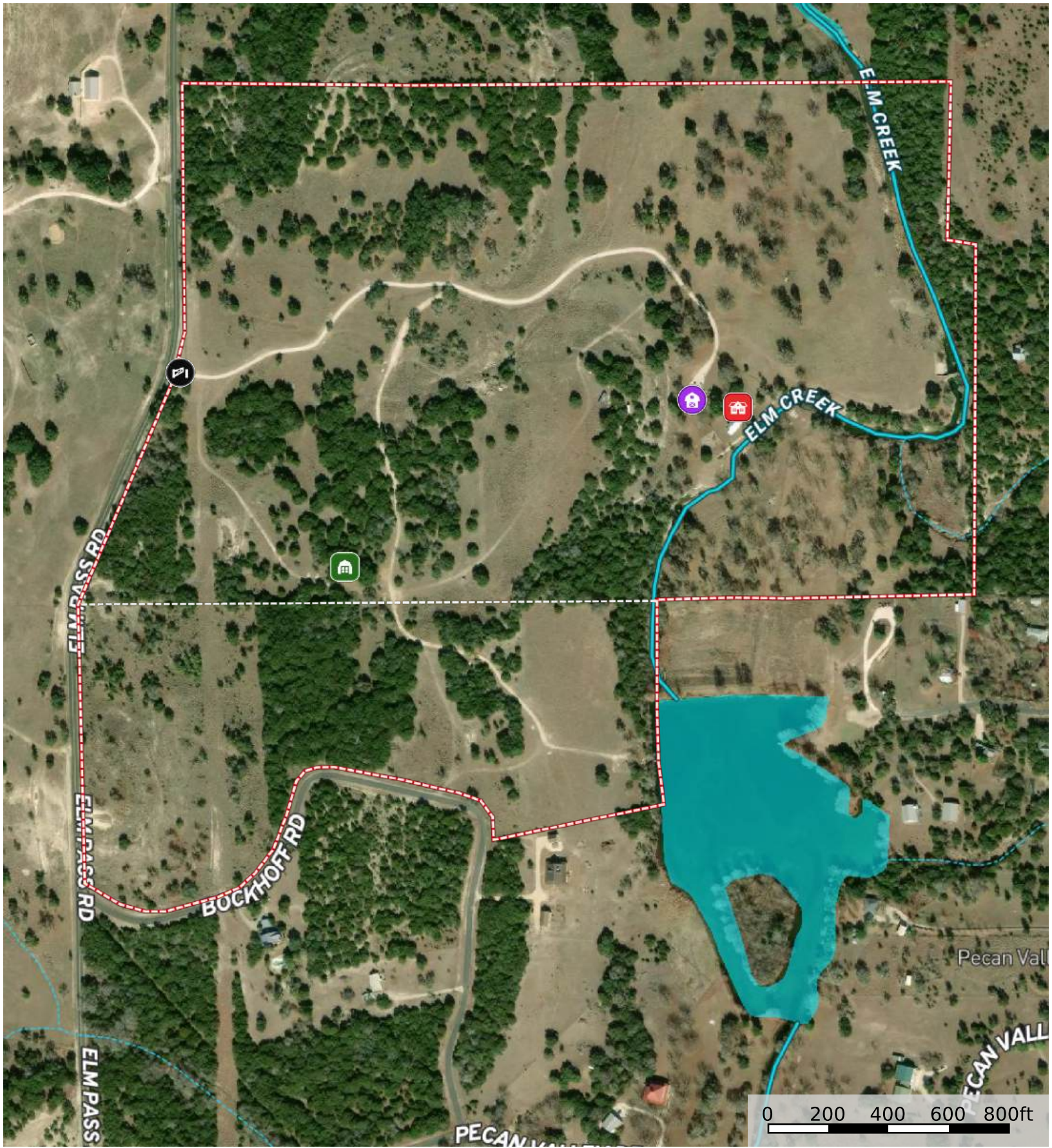
Elm Creek is dammed up on the property by a rock and concrete dam. Around the dam, there is extensive rock work that has been done that provides a wonderful place to relax and enjoy nature. The ranch has over 300' of frontage on a private 10 acre lake. A great place to swim and do a little fishing.

The land has been meticulously taken care of, and there is a nice blend of open areas and heavy cover, that makes it ideal for wildlife. Along with whitetail, there are axis on the ranch, offering year round hunting opportunities. There is lush native grasses and huge hardwoods, including oaks, cedar elms and pecan trees.

The ranch is conveniently located less than an hour from San Antonio and a short drive to all the necessities in Kerrville.

All information is subject to change and not warranted or guaranteed by Reno Realty Group





 Gate     Shed / Shack     Barn     Main House     Fence     Boundary     Stream, Intermittent     River/Creek     Water Body



